

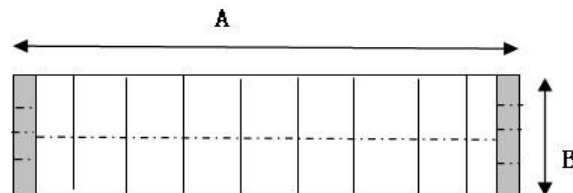
1. General Production Information

Characteristic	Specification
Description	Non-woven clip cap
Classification	Class I, Rule I
Material and weight	100% Spunbonded Polypropylene, 11g/m ² +/-2g/m ²
Elastic type	Latex free

Model	Code
Non-woven clip cap, white	W123300000
Non-woven clip cap, blue	W123100000
Non-woven clip cap, green	W123200000

2. Sizes and Parameters

Drawing No.	Size (cm)	Tolerance (cm)	Remark
A	52.5	+/-0.5	Stretched total length of the cap
B	2	+/-0.2	Width of the folded clip

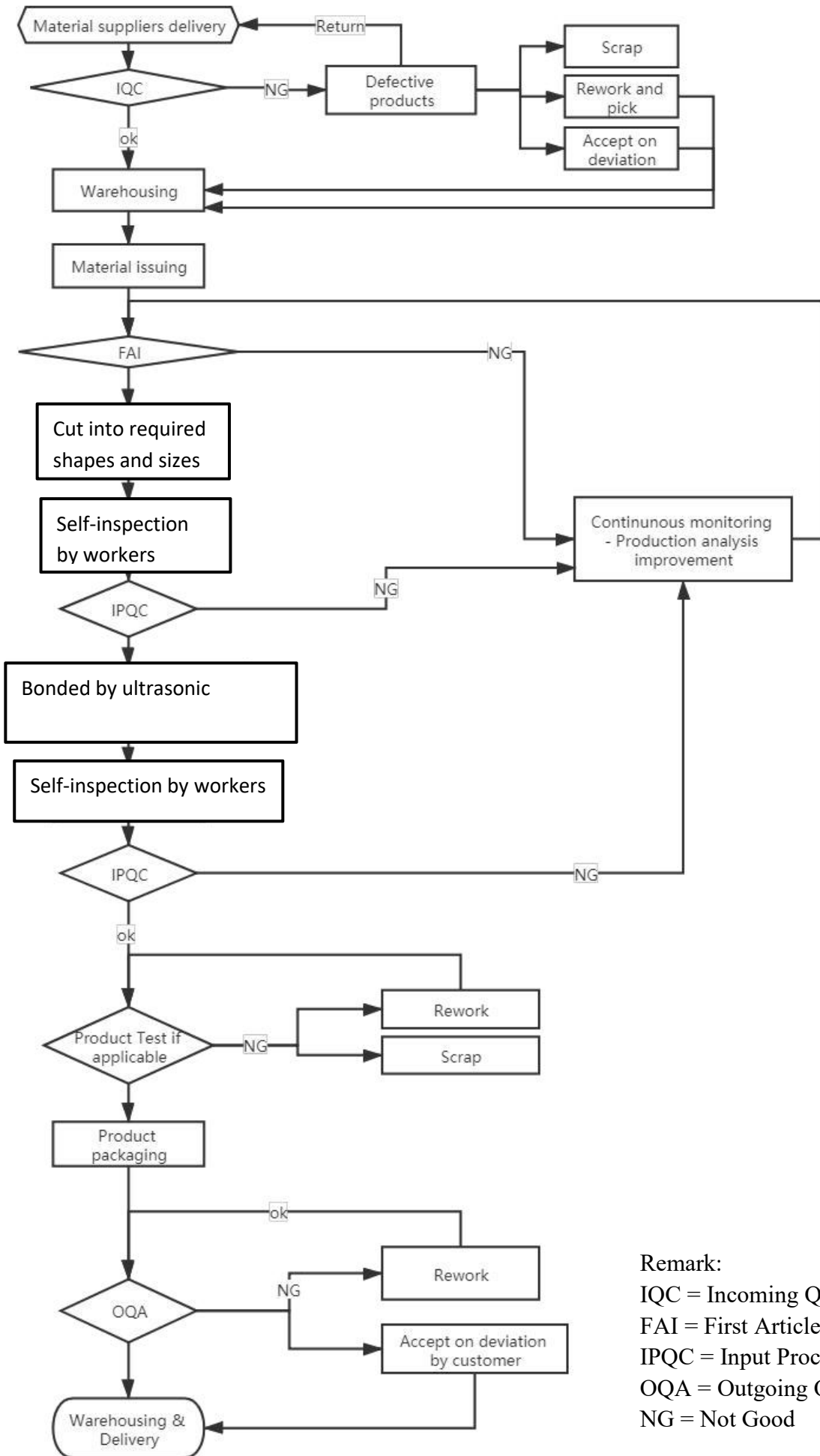


3. Packaging

Code	Packing	Weight of each polybag (Kgs)	Carton Measures	Weight of each carton (Kgs)
W123300000	100pcs/polybag, 10polybags/carton	0.23	42.5x27x23cm	2.8
W123100000	100pcs/polybag, 10polybags/carton	0.23	42.5x27x23cm	2.8
W123200000	100pcs/polybag, 10polybags/carton	0.23	42.5x27x23cm	2.8

4. Production Process

See in next page



Remark:


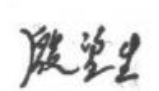

IQC = Incoming Quality Control

FAI = First Article Inspection

IPQC = Input Process Quality Control

OQA = Outgoing Quality Assurance

NG = Not Good

Prepared by	Audited by	Approved by
		
2022-02-25	2021-02-28	2021-03-01