

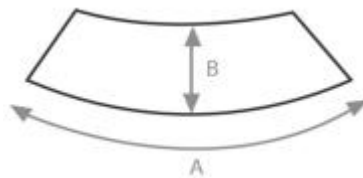
## 1. General Production Information

Characteristic	Specification
Description	CPE shoe cover
Classification	Class I, Rule I
Material, weight, thickness	Chlorinated polyethylene , 2.8g/piece ( $\pm 0.2$ g/piece), 0.02mm
Elastic type	Latex free

Model	Code
CPE shoe cover, white	W503300000
CPE shoe cover, blue	W503100000
CPE shoe cover, green	W503200000

## 2. Sizes and Parameters

Drawing No.	Size (cm)	Tolerance (cm)	Remark
A	43	$\pm 0.5$	Stretched total length of the shoe cover
B	15	$\pm 0.2$	Width of the shoe cover

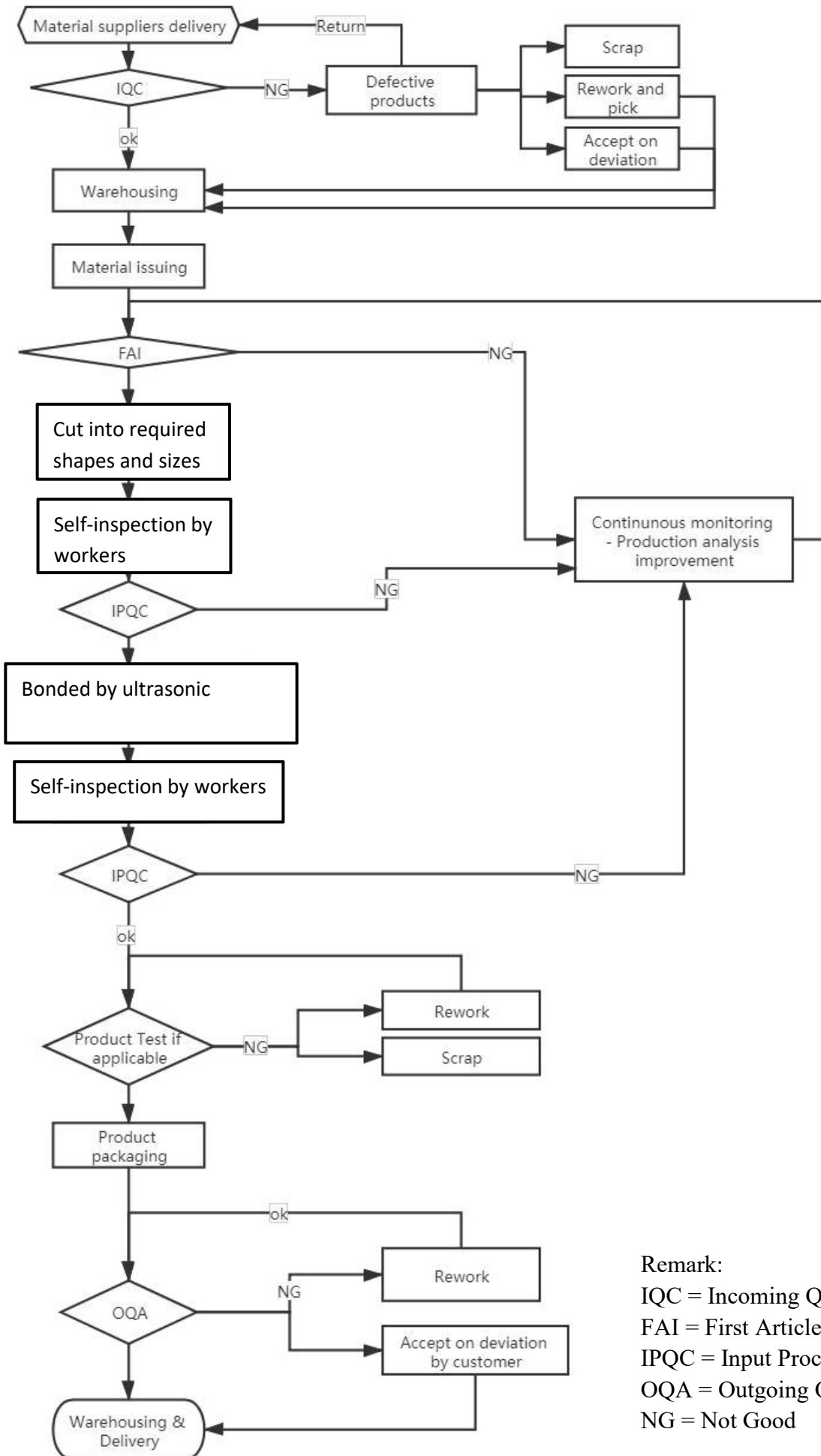


### 3. Packaging

Code	Packing	Weight of each polybag (Kgs)	Carton Measures	Weight of each carton (Kgs)
W503300000	100pcs/polybag, 10polybags/carton	0.26	36x19x28cm	3.1
W503100000	100pcs/polybag, 10polybags/carton	0.26	36x19x28cm	3.1
W503200000	100pcs/polybag, 10polybags/carton	0.26	36x19x28cm	3.1

### 4. Production Process

See in next page



**Remark:**

IQC = Incoming Quality Control

FAI = First Article Inspection

IPQC = Input Process Quality Control

OQA = Outgoing Quality Assurance

NG = Not Good

Prepared by	Audited by	Approved by
		
2022-02-25	2021-02-28	2021-03-01